

# Willkommen in Deutschland!

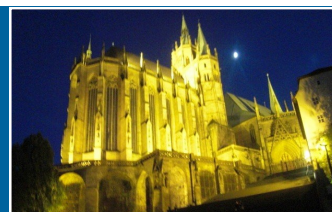
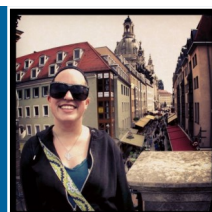
## CONTACT

Dr. Rene Paddags, Faculty Director  
124 Andrews Hall, 419.289.5335  
rpaddags@ashland.edu

Global Education Office  
100 Founders, 419.289.5870  
global@ashland.edu

## HOW TO APPLY

1. Create an account on Abroad Office—<http://ashland.abroadoffice.net>
2. On the left, choose 2015 AU Programs, then AU in Germany Program page. Click Apply to Program and complete application information.
3. **Submit deposit** to the Global Education Office [100 Founders] prior to the deadline.



## ABOUT AU IN GERMANY

This unique summer travel experience has been offered annually since 2005, with over 120 students and 17 different faculty members taking advantage of this great opportunity. Students spend **three weeks** in eastern Germany with fellow Ashland students, earning **six summer credits** through AU courses. This program is approved for **GPS Course with Study Away** status.

## COURSE INFORMATION

Course	Core	Instructor
ART 150: Art and Ideas	Aesthetics	Dr. Wendy Schaller
POLSC 3SG: Contemporary Germany	Social Science	Dr. Rene Paddags
CHEM 251: Molecular Architecture	Natural Science	Dr. Rob Bergosh
BUS 439: Business Internship	Business Majors Only BUS 339 is a prerequisite	Dr. Khush Pittenger

## IN THEIR OWN WORDS

"Studying in Germany opened my eyes to a world outside of my comfort zone and I'm so blessed I was able to have this experience. I plan to take it with me for future use regarding employment and I know I will always have these cherished memories. It was awesome how much I bonded with the group of people who went on this trip with me; we're kind of like a family now!" - Hillary Falter, AU in Germany 2013

"This trip was the first trip I have taken to a foreign country so it opened up my eyes to all of the things other countries have to offer. This trip gave me a greater respect for the differences of other cultures. - Travis Wolfgang, AU in Germany 2012

## ESTIMATED PROGRAM COST

**Approximately \$5040** (Increased airline fuel charges could raise the price)

**INCLUDED:** Two Ashland courses (six summer credit hours), airfare, double room, excursion package, international health insurance, kitchen/laundry access, local lecturers, group airport shuttle in-country, daily breakfast, five dinners, three dinners during the weekend excursions, rental bike, and tips for tour directors, drivers and guides

**NOT INCLUDED:** Ashland University housing during the first week of classes (approx. \$10 a day), meals not included (approx. \$10/meal), expenses for passport, baggage fees for domestic flight and personal expenses (min. \$700)

## PRICE COMPARISON

2 Summer Courses on Ashland Campus with housing = **\$3,126**

2 Summer Courses with AU in Germany = **\$5,040**

## TENTATIVE ITINERARY

Week 1	Attend Class Sessions at Ashland University and Depart for Wittenberg, Germany on Saturday, May 16
Weeks 2-3	Attend Class Sessions, Evening Cultural Activities
Week 4	Excursion Week: Day Trip to Berlin and Overnight Excursions to Weimar, Leipzig, Dresden, Erfurt, and Eisenach. Depart Germany on June 6

## DEADLINES & PAYMENTS

**December 1** — \$500 Non-refundable deposit due

**February 1** — Remaining balance charged to AU account



# AU IN GERMANY

Course with Study Away  
May 11-June 6, 2015

Updated August 22 2014