

# Willkommen in Deutschland!

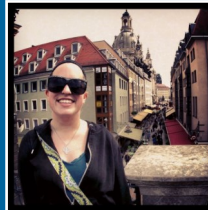
## CONTACT

Dr. Rene Paddags, Faculty Director  
124 Andrews Hall, 419.289.5335  
rpaddags@ashland.edu

Global Education Office  
104 Founders, 419.289.5870  
global@ashland.edu

## HOW TO APPLY

1. Create an account on Abroad Office—<http://ashland.abroadoffice.net>
2. On the left, choose 2017 AU Programs, then AU in Germany Program page. Click Apply to Program and complete application information.
3. Submit deposit to the Global Education Office [104 Founders] prior to the deadline.



## ABOUT AU IN GERMANY

This unique summer travel experience has been offered annually since 2005, with over 150 students and 17 different faculty members taking advantage of this great opportunity. Students spend **three weeks** in eastern Germany with fellow Ashland students, earning **six summer credits** through AU courses. This program is approved for **fulfilling the CCI Requirement**.

## COURSE INFORMATION

Course	Core	Instructor
BIO 111: Wetlands and Waterways	Natural Science	Dr. Patricia Saunders
POLSC 3SG: Contemporary Germany	Social Science	Dr. Rene Paddags
REL3SLG: Luther and the German Reformation	Humanities	Dr. David Aune
BUS 439: Business Internship	Business Majors Only BUS 339 is a prerequisite	Dr. Khush Pittenger

## IN THEIR OWN WORDS

“Studying in Germany opened my eyes to a world outside of my comfort zone and I’m so blessed I was able to have this experience. I plan to take it with me for future use regarding employment and I know I will always have these cherished memories. It was awesome how much I bonded with the group of people who went on this trip with me; we’re kind of like a family now!” - Hillary Falter

“This trip was the first trip I have taken to a foreign country so it opened up my eyes to all of the things other countries have to offer. This trip gave me a greater respect for the differences of other cultures.” - Travis Wolfgang

## ESTIMATED PROGRAM COST

**Approximately \$4,977** (Increased airline fuel charges could raise the price)

**INCLUDED:** Two Ashland courses (six summer credit hours), airfare, double room, excursion package, international health insurance, kitchen/laundry access, local lecturers, group airport shuttle in-country, daily breakfast, five dinners, four dinners during the weekend excursions, rental bike, and tips for tour directors, drivers and guides

**NOT INCLUDED:** Ashland University housing during the first two week of classes (approx. \$10 a day), meals not included (approx. \$10/meal), expense for passport, and personal expenses (est. \$700–\$1000)

## PRICE COMPARISON

- 2 Summer Courses on Ashland Campus with housing = **\$3,026**
- 2 Summer Courses with AU in Germany = **\$4,977**

## TENTATIVE ITINERARY

<b>Weeks 1-2</b>	Attend Class Sessions at Ashland University and Depart for Wittenberg, Germany on Saturday, May 20
<b>Week 3-4</b>	Attend Class Sessions, Evening Cultural Activities
<b>Weeks 5</b>	Excursion Week: Day Trip to Berlin and Overnight Excursions to Weimar, Leipzig, Dresden, Erfurt, and Eisenach. Depart Germany on June 11

## DEADLINES & PAYMENTS

- November 1** – Submit deposit for early bird scholarship
- December 1** – \$500 Non-refundable deposit due
- February 1** – Remaining balance charged to AU account (non-refundable)
  - Summer Stafford Loans available
  - Interest free until departure date



Wittenberg, Germany



# AU IN GERMANY

Course with Study Away

May 8-June 11, 2017